

NOTES:

1. ENCLOSURE ASSEMBLY:

a.) FOR A CATERPILLAR 1750kW 3516C GEN-SET (ACS TO MOUNT ON SUB-BASE FUEL TANK).

b.) FULLY ASSEMBLED ACOUSTICAL ENCLOSURE TO BE MOUNTED TO BASE TANK AND THEN ANCHORED TO THE FOUNDATION.

c.) PANEL JOINTS ARE SKIP WELDED AND CAULKED.
2. ENCLOSURE CONSTRUCTION:

a.) SKIN – 14 GA. GALVANNEAL STEEL (WALLS).

14 GA. GALVANNEAL STEEL (ROOF).

b.) FRAMING – A36 STRUCTURAL CHANNEL & A500-B TUBING.

c.) INNER LINER – GALVANIZED PERFORATED STEEL.

d.) INSULATION – MINERAL WOOL PROTECTED BY 2 MIL POLY COVERING WALLS AND ROOF.

e.) DOORS – FOUR (4) SINGLE ACCESS SERVICE DOORS WITH STAINLESS STEEL HINGES & CHROME PLATED REFRIGERATOR DOOR LATCH w/ INSIDE RELEASE.

f.) ONE (1) FIXED INLET WEATHER LOUVER (GALVANNEAL CONSTRUCTION).

g.) 60T” DEEP INLET BAFFLE PANELS (GALVANNEAL CONSTUCTION).

h.) 36” DEEP DISCHARGE BAFFLE PANELS (GALVANNEAL CONSTRUCTION).

i.) ONE (1) GRAVITY BACKDRAFT DAMPER – (ALUMINUM CONSTRUCTION).

j.) ONE (1) INTERNAL DISCHARGE ELBOW – (GALVANIZED CONSTRUCTION).
3. DESIGN CONSTRUCTION:

a.) AIR FLOW RATES;

RADIATOR – 87,580 CFM

COMBUSTION – 6,175 CFM

b.) PRESSURE DROPS;

INLET & DISCHARGE LOUVERS/BAFFLES 0.5” W.G. OR LESS (TOTAL).

c.) PERFORMANCE;

DESIGNED TO REDUCE THE GEN-SET EQUIPMENT NOISE LEVEL TO 62 dBA WHEN MEASURED AT A DISTANCE OF 23 FEET FROM THE ENCLOSURE AND 5 1/2 FEET ABOVE GRADE.

(PROVIDING THE EQUIPMENT NOISE DOES NOT EXCEED 120 dBA @ 3 FEET).
4. PAINTING:

a.) ALL EXTERIOR GALVANIZED SURFACES TO BE SOLVENT CLEANED PER SSPC-SP1 AND PAINTED AS FOLLOWS;

* PRIMER – INDUSTRIAL WASH PRIMER.

* INTERMEDIATE – ONE COAT AMERON AMERLOCK 2 (3-5 MILS DFT).

* FINISH – ONE COAT AMERON PSX 700 POLYURETHANE TEXTURE (2-3 MILS DFT).

* ENCLOSURE INTERIOR WALL AND ROOF SURFACES WILL NOT BE PAINTED.

b.) ALL CARBON STEEL SURFACES TO BE POWER TOOL CLEANED PER SSPC-SP3 AND PAINTED AS FOLLOWS;

* PRIMER – INDUSTRIAL WASH PRIMER.

* INTERMEDIATE – ONE COAT AMERON AMERLOCK 2 (3-5 MILS DFT).

* FINISH – ONE COAT AMERON PSX 700 POLYURETHANE TEXTURE (2-3 MILS DFT).

* INTERIOR SURFACES WILL NOT BE PAINTED.

c.) COLOR- PRECISION TAN.

5. BASE FUEL TANK: U.L. 142, SUB BASE, 3,590 GALLON CAPACITY
FINISH PAINTED TO MATCH ENCLOSURE.
6. ELECTRICAL:

a.) SEE ELECTRICAL 11841-10E.
7. QUANTITY REQUIRED:

TWO (2) GEN-SET ENCLOSURE ASSEMBLIES

TWO (2) U.L. 142 SUB BASE FUEL TANKS

(ACS TO ASSIST WITH SETTING ENCLOSURE AND HOOK UP CONNECTIONS)
8. WEIGHTS:

ESTIMATED WEIGHTS ARE AS FOLLOWS:

1) ENCLOSURE ASSEMBLY – 27,450 LBS

2) SUB BASE FUEL TANK – 16,900 LBS

3) GENSET ASSEMBLY – 40,000 LBS

TOTAL – 84,350 LBS
9. SHIPPING SIZES:

1) ENCLOSURE ASSEMBLY – 472”L x 162”W x 156”H

2) U.L. 142 SUB BASE FUEL TANK: – 400”L X 156”W X 25”H

3) GENSET ASSEMBLY – 246”L X 97”W X 117”H
10. ACS CONTACT INFORMATION

SALES: TIMMY BRENT

TELEPHONE: 903.462.2030

E-MAIL: timmy.brent@acsmanufacturing.com

SALES: PHILIP MACHA

TELEPHONE: 903.462.2008

E-MAIL: philip.macha@acsmanufacturing.com

PROJECT MANAGER: STEVE ORRICK

TELEPHONE: 903.462.2020

E-MAIL: steve.orrick@acsmanufacturing.com

☐ APPROVED AS IS – Manufacturing may proceed.

☐ APPROVED WITH NOTED CHANGES – Resubmit drawing; manufacturing may proceed.

☐ NOT APPROVED – Correct drawing as noted and resubmit for approval before manufacturing begins.


BY: _____ DATE: _____

COMPANY: _____

RETURNED APPROVAL DRAWINGS WITH SIGNATURE
REQUIRED BEFORE ACS WILL BEGIN
MANUFACTURING PROCESS

QUOTE NO.: 1204020 REV. 6
PO NO.: 120043E001
WO NO.: TBD
JOB NAME: US AIR

*CUSTOMER TO VERIFY ALL NOTES AND DIMENSIONS



ACS MANUFACTURING, INC.
1601 COMMERCE BLVD. - DENISON, TEXAS - 75020

TOLERANCES (EXCEPT AS NOTED)		DRAWN BY: MTS	
DECIMAL	± 0.125"	CHECKED BY:	
FRACTIONAL	± 1/8"	CHECKED BY:	
ANGULAR	± 3°	APPROVED BY: SO	
SCALE	1 TO 1	SHEET	
DATE	05/18/12	REV.	
DRAWING NUMBER		1 of 4	

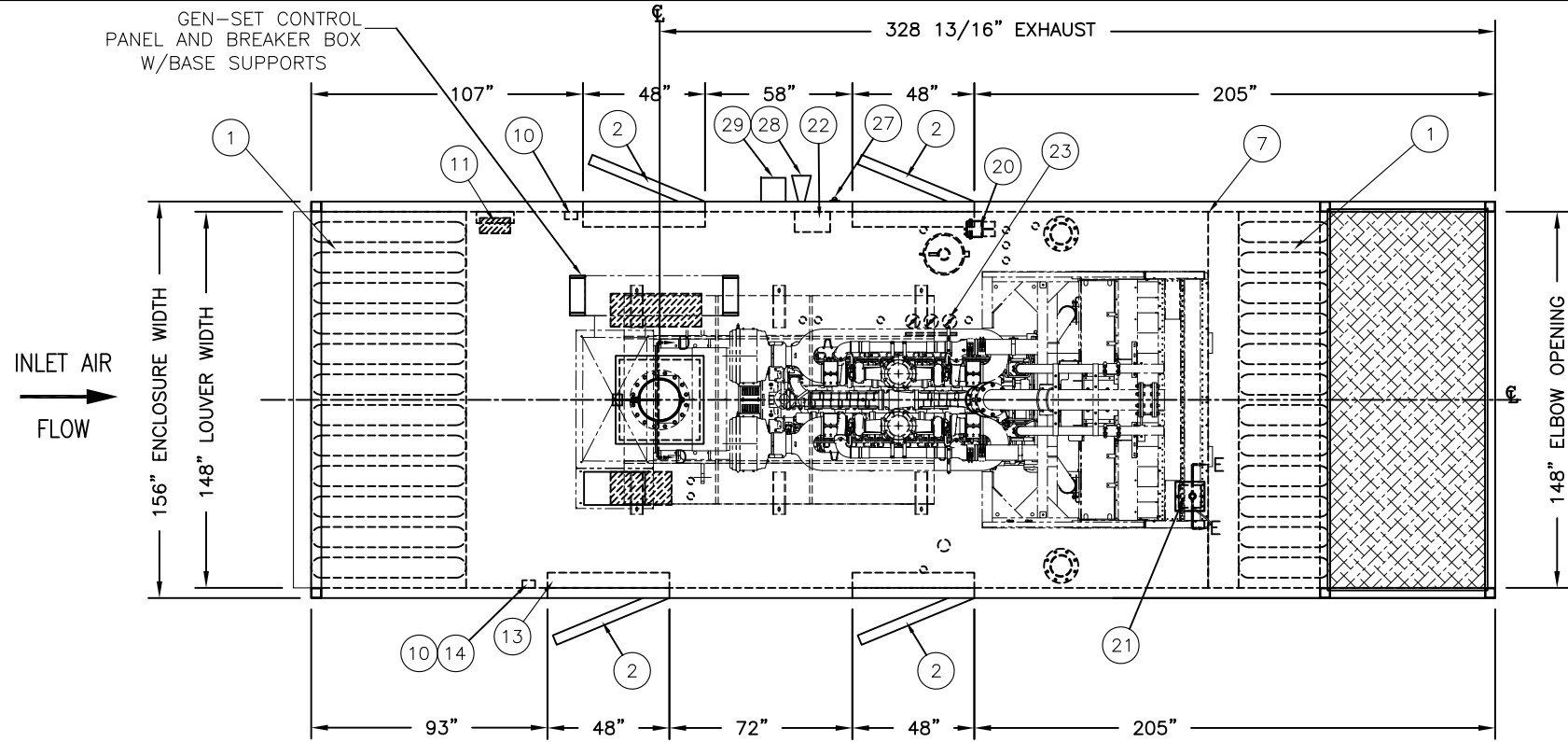
EMPIRE CAT

ACOUSTICAL ENCLOSURE
TEXT SHEET

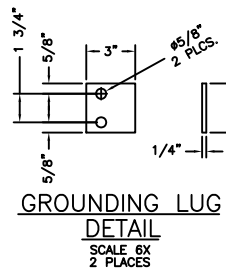
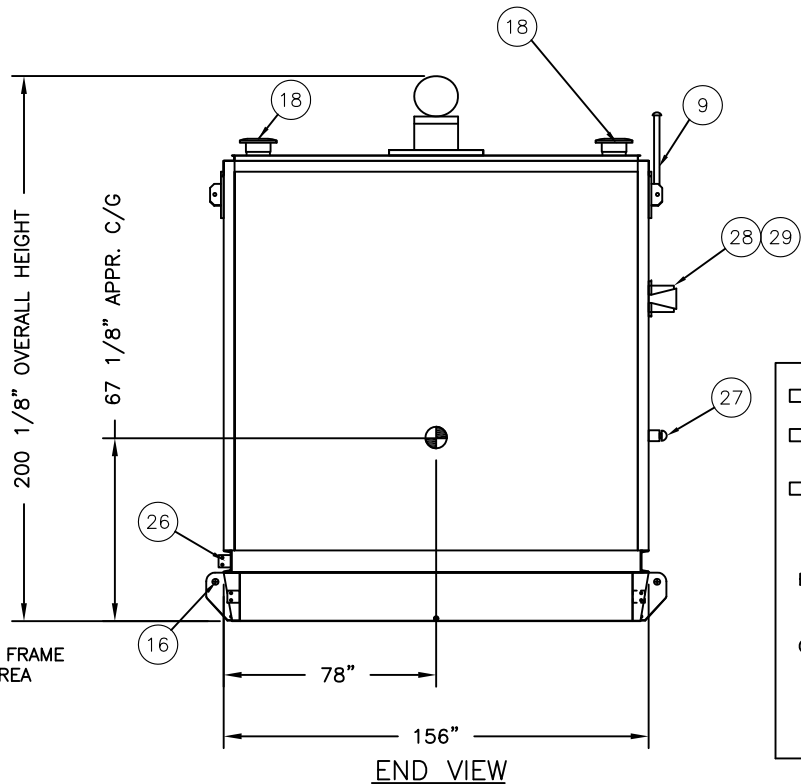
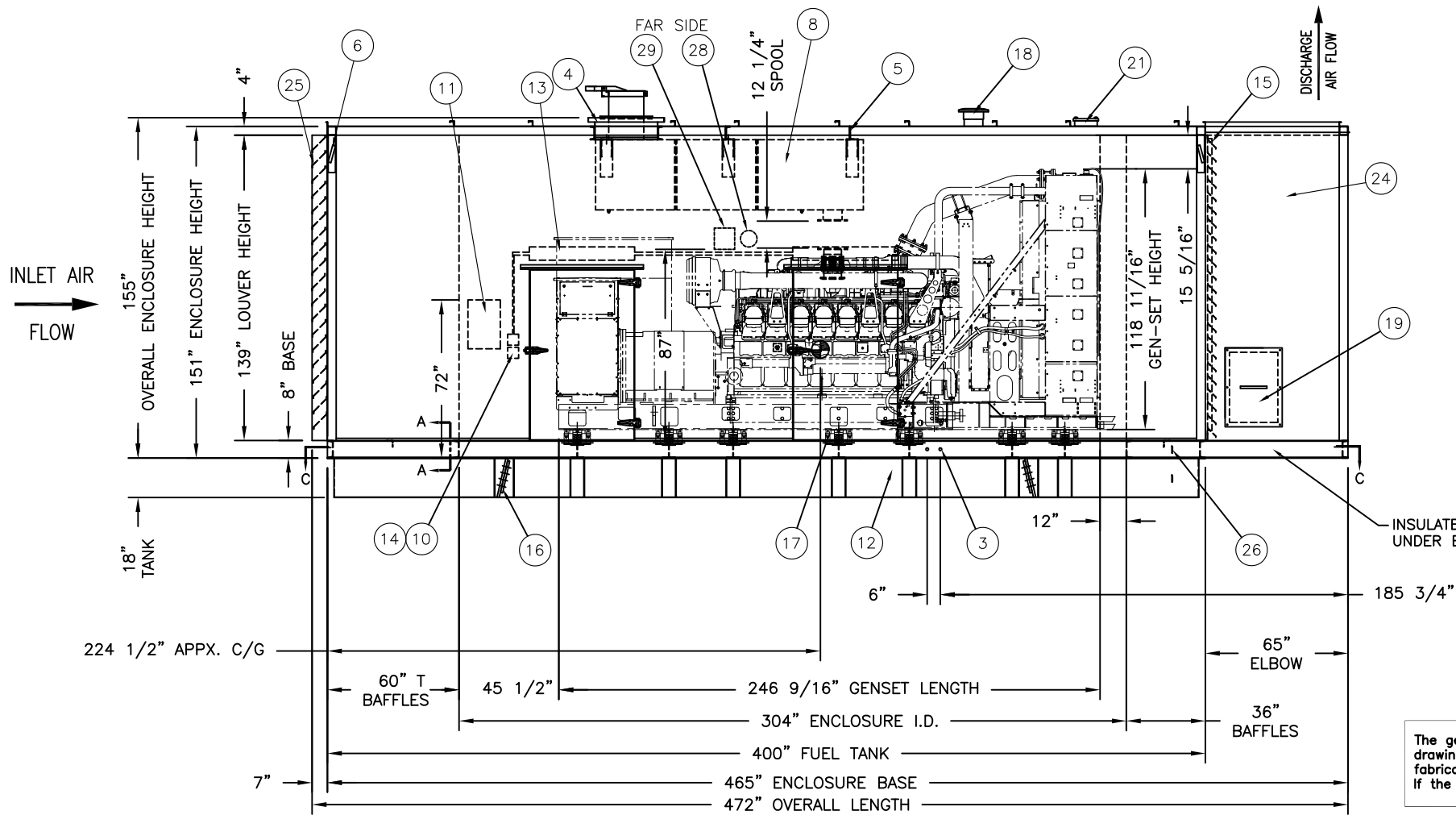
11841-10

PROPRIETARY NOTICE
THIS DRAWING CONTAINS DESIGNS AND OTHER INFORMATION WHICH ARE THE PROPERTY OF ACS MANUFACTURING, INC. EXCEPT FOR THE RIGHTS GRANTED EXPRESSLY BY CONTRACT, THIS DRAWING MAY NOT BE DISCLOSED OR DUPLICATED IN WHOLE OR IN PART OR USED FOR MANUFACTURE OF DESIGNS DISCLOSED HEREIN WITHOUT THE PRIOR WRITTEN PERMISSION OF ACS MANUFACTURING, INC.

F		AS BUILT	DK	SO	11/1/12
E		SEE SHEETS 2 & 4	DK	SO	09/10/12
D		SEE SHEETS 2 & 4	DM	SO	07/30/12
C		SEE SHEET 2	MS	SO	06/18/12
B		UPDATED PERFORMANCE DATA	MS	SO	06/11/12
A		SEE SHEET 2	MS	SO	05/22/12
REV	ECO NUMBER	DESCRIPTION	BY	APPD	DATE



Parts List		
ITEM	QTY	NAME
1	24	BAFFLE PANEL W/MINERAL WOOL
2	4	48" X 78" SINGLE DOOR - DOUBLE SEAL
3	2	1" SKID COUPLINGS - OIL & COOLANT DRAINS, EXTENDED TO ENCLOSURE BASE CHANNEL, BALL VALVE INSIDE AND PLUGGED OUTSIDE. (NEAR SIDE)
4	1	SSTL EXHAUST WEATHER COVER W/16" ANSI FLANGE
5	4	INTERNAL MUFLER SUPPORT CHANNEL
6	4	ENCLOSURE LIFTING LUG (DESIGNED TO LIFT ENCLOSURE ONLY) WELD-ON
7	1	RADIATOR FLASHING
8	1	COMPLETE EXHAUST SYSTEM (INCLUDING MUFLER, FLEXES w/BLANKETS, TAILPIPE, RAIN CAP, NBG KIT)
9	1	FUEL TANK NORMAL VENT(EXTENDED TO ROOF LINE AT LEAST 12' ABOVE GRADE)
10	2	DUPLEX RECEPTACLE, 20A
11	1	LOAD CENTER w/BREAKERS, 100A - 120/240V, 1PH
12	1	UL-142 BASE TANK, 3,590 GALLON CAPACITY
13	4	FLOURESCENT LIGHT FIXTURE
14	2	3-WAY LIGHT SWITCH
15	1	DISCHARGE GRAVITY BACKDRAFT DAMPER (ALUMINUM)
16	4	TANK LIFTING LUGS (DESIGNED TO LIFT TANK AND GENSET ONLY) BOLT-ON
17	14	SPRING ISOLATOR (BY OTHERS) ACS TO MOUNT AND INSTALL
18	2	FUEL TANK EMERGENCY VENT(EXTENDED TO ROOF LINE AT LEAST 12' ABOVE GRADE)
19	1	ELBOW ACCESS HATCH
20	1	FUEL TANK ANNUNCIATOR PANEL W/AUDIBLE & VISUAL ALARMS
21	1	RADIATOR ACCESS HATCH
22	1	BATTERY CHARGER (BY OTHERS) INSTALLED BY ACS
23	1	RACOR FILTER ASSEMBLY (ACS TO MOUNT AND PLUMB)
24	1	INTERNAL DISCHARGE ELBOW
25	1	INTAKE FIXED WEATHER LOUVER
26	2	GROUNDING LUG, 304SS (LOCATED ON OPPOSING CORNERS OF BASE FRAME)
27	1	EMERGENCY STOP STATION (PULL TO STOP FLIP-UP COVER)
28	1	SIGNAL HORN
29	1	SIGNAL LIGHT



- ☐ APPROVED AS IS - Manufacturing may proceed.
- ☐ APPROVED WITH NOTED CHANGES - Resubmit drawing; manufacturing may proceed.
- ☐ NOT APPROVED - Correct drawing as noted and resubmit for approval before manufacturing begins.

BY: _____ DATE: _____

COMPANY: _____

RETURNED APPROVAL DRAWINGS WITH SIGNATURE
REQUIRED BEFORE ACS WILL BEGIN
MANUFACTURING PROCESS

QUOTE NO.: 1204020 REV. 6
PO NO.: 120043E001
WO NO.: TBD
JOB NAME: US AIR

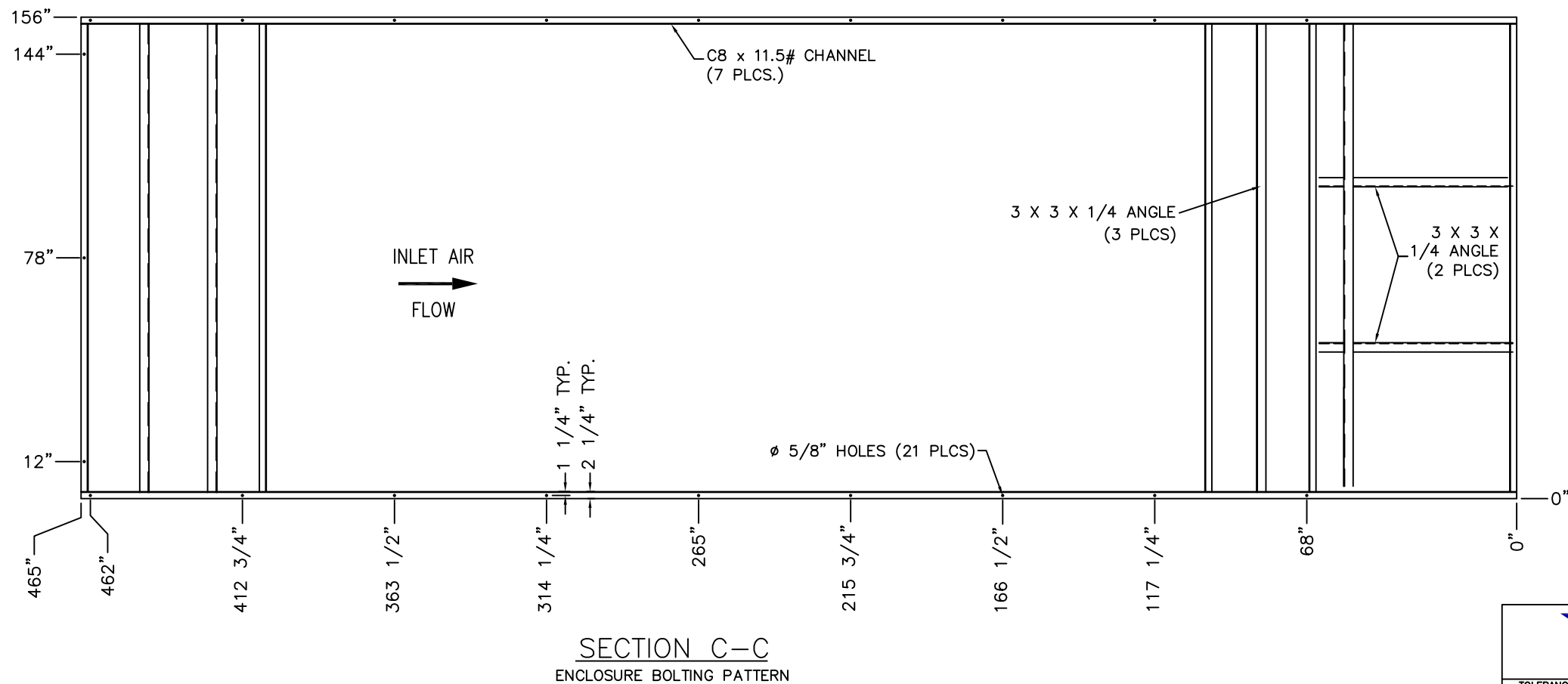
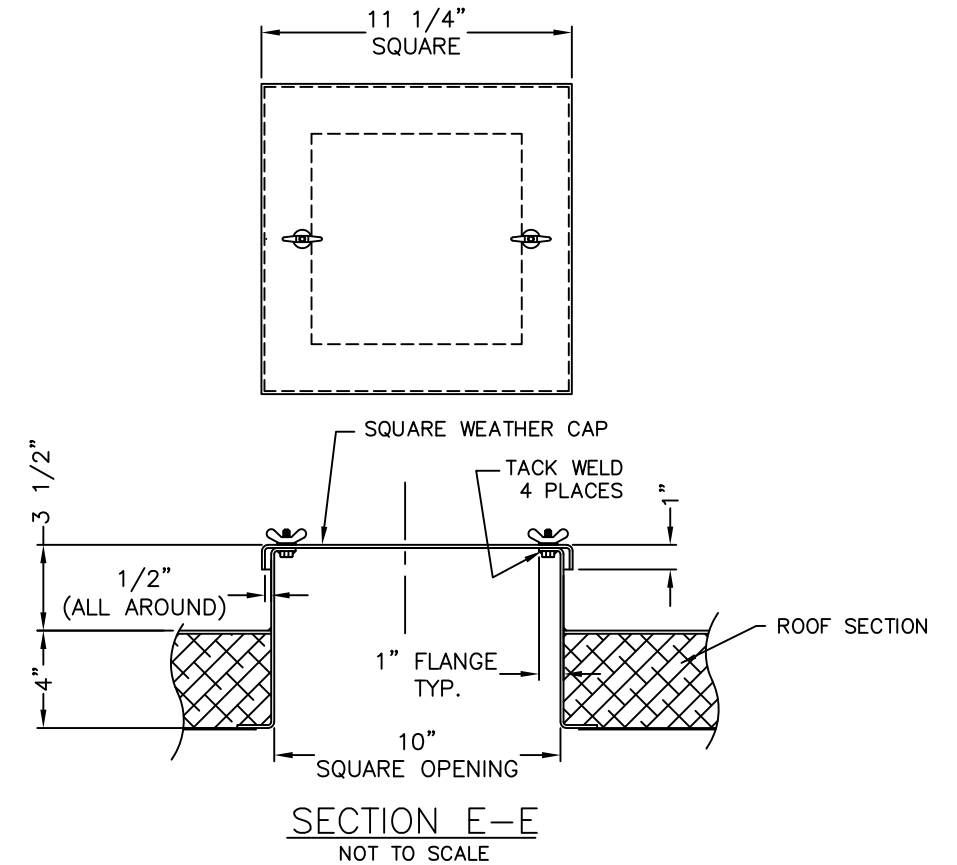
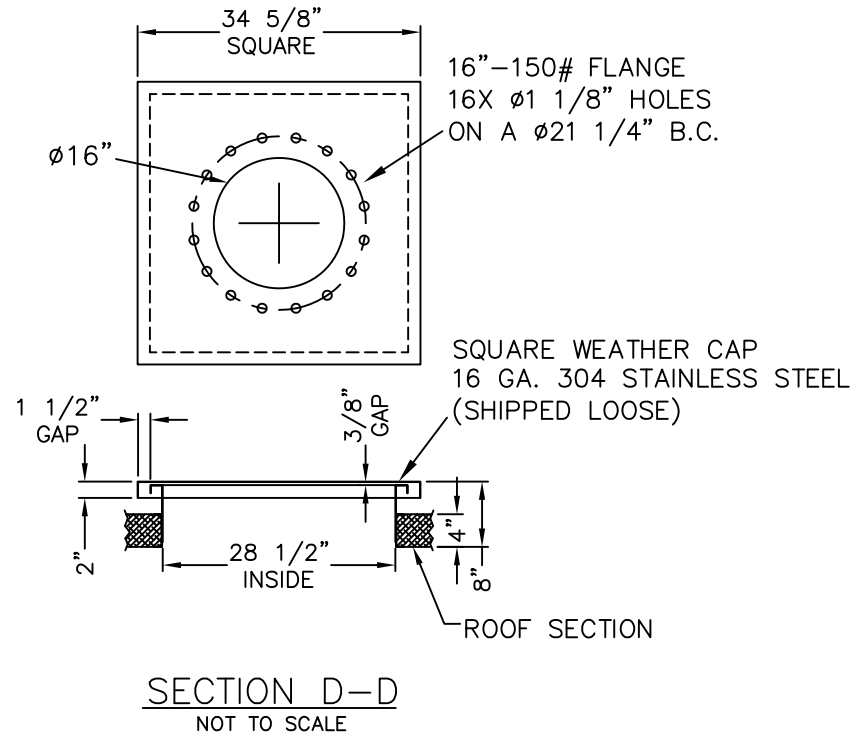
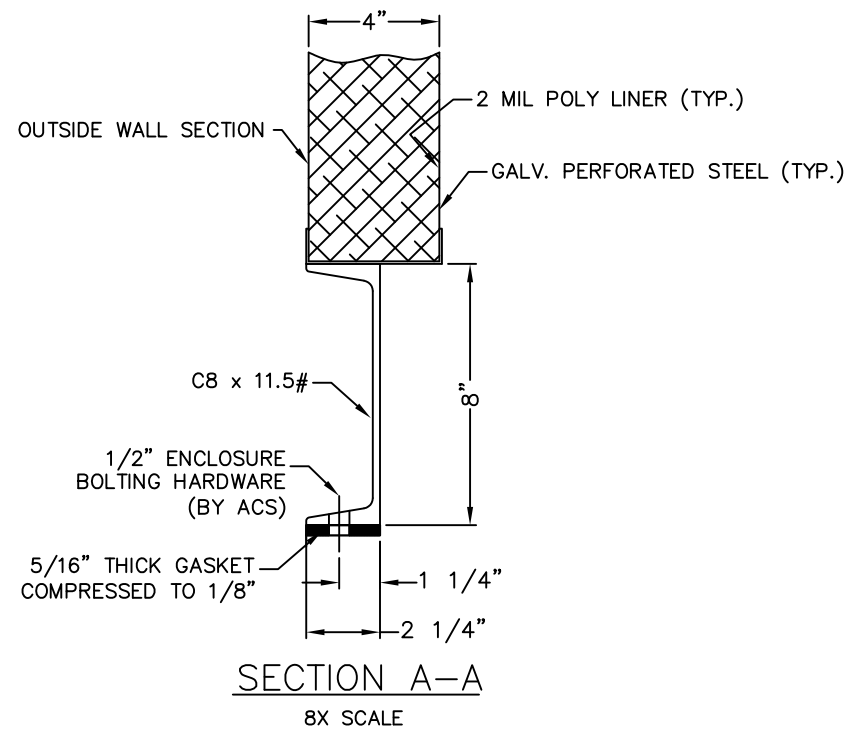


TOLERANCES (EXCEPT AS NOTED)		DATE	
DECIMAL	± 0.125"	11/1/12	CL SO
FRACTIONAL	± 1/8"	09/10/12	DK SO
ANGULAR	± 3°	07/30/12	DM SO
SCALE	1 TO 1	06/18/12	MS SO
DATE	05/18/12	06/11/12	MS SO
DATE	05/22/12	05/22/12	MS SO
REV	ECO NUMBER	DESCRIPTION	BY APPD

EMPIRE CAT		DRAWN BY: MTS	
CHECKED BY:		CHECKED BY:	
APPROVED BY: SO		APPROVED BY: SO	
SHEET 2 of 4		REV. F	

PROPRIETARY NOTICE
THIS DRAWING CONTAINS DESIGNS AND OTHER INFORMATION WHICH ARE THE PROPERTY OF ACS MANUFACTURING, INC. EXCEPT FOR THE RIGHTS GRANTED EXPRESSLY BY CONTRACT, THIS DRAWING MAY NOT BE DISCLOSED OR DUPLICATED IN WHOLE OR IN PART OR USED FOR MANUFACTURE OF DESIGNS DISCLOSED HEREIN WITHOUT THE PRIOR WRITTEN PERMISSION OF ACS MANUFACTURING, INC.

The gen-set was not available for physical review when this drawing was created. Please verify all dimensions prior to fabrication of parts connected to the location of the gen-set. If the dimensions do not match please contact Engineering



- ☐ APPROVED AS IS - Manufacturing may proceed.
- ☐ APPROVED WITH NOTED CHANGES - Resubmit drawing; manufacturing may proceed.
- ☐ NOT APPROVED - Correct drawing as noted and resubmit for approval before manufacturing begins.

BY: _____ DATE: _____

COMPANY: _____

RETURNED APPROVAL DRAWINGS WITH SIGNATURE
REQUIRED BEFORE ACS WILL BEGIN
MANUFACTURING PROCESS

QUOTE NO.: 1204020 REV. 6
PO NO.: 120043E001
WO NO.: TBD
JOB NAME: US AIR

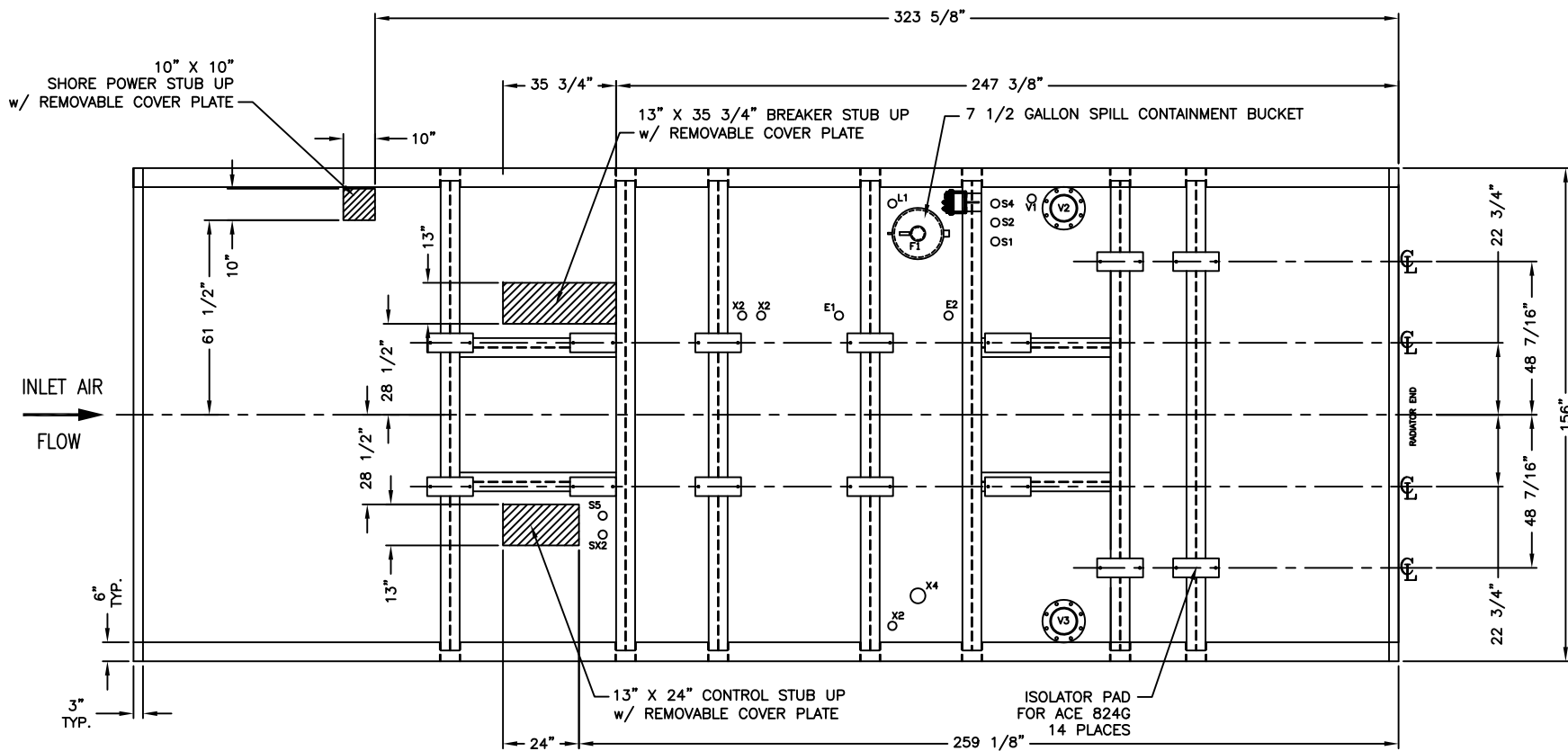


TOLERANCES (EXCEPT AS NOTED)					DRAWN BY: MTS	
F	AS BUILT	CL	SO	11/1/12	CHECKED BY:	
E	SEE SHEETS 2 & 4	DK	SO	09/10/12	CHECKED BY:	
D	SEE SHEETS 2 & 4	DM	SO	07/30/12	APPROVED BY: SO	
C	SEE SHEET 2	MS	SO	06/18/12	SHEET	
B	SEE OTHER SHEETS	MS	SO	06/11/12	REV.	
A	SEE SHEET 2	MS	SO	05/22/12	3 of 4	
REV	ECO NUMBER	DESCRIPTION	BY	DATE	F	

TITLE	EMPIRE CAT
TITLE	ACOUSTICAL ENCLOSURE ASSEMBLY DETAIL SHEET
DRAWING NUMBER	11841-10

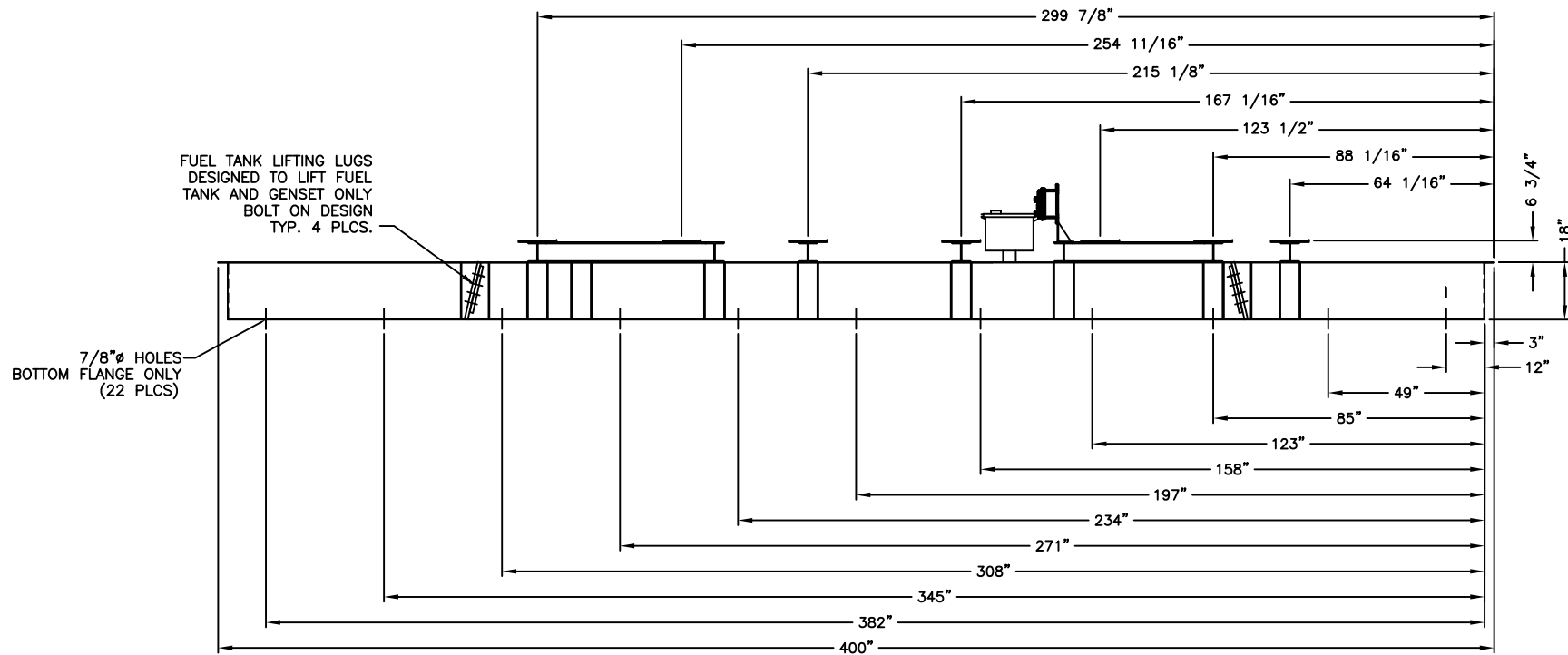
PROPRIETARY NOTICE

THIS DRAWING CONTAINS DESIGNS AND OTHER INFORMATION WHICH ARE THE PROPERTY OF ACS MANUFACTURING, INC. EXCEPT FOR THE RIGHTS GRANTED EXPRESSLY BY CONTRACT, THIS DRAWING MAY NOT BE DISCLOSED OR DUPLICATED IN WHOLE OR IN PART OR USED FOR MANUFACTURE OF DESIGNS DISCLOSED HEREIN WITHOUT THE PRIOR WRITTEN PERMISSION OF ACS MANUFACTURING, INC.



PLAN VIEW

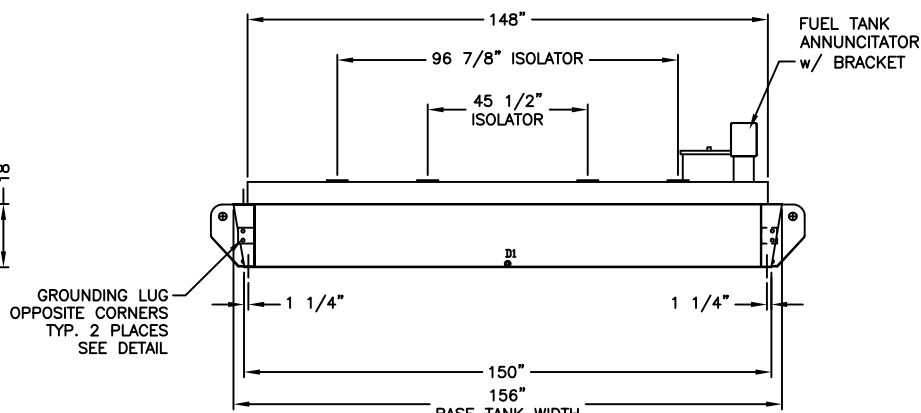
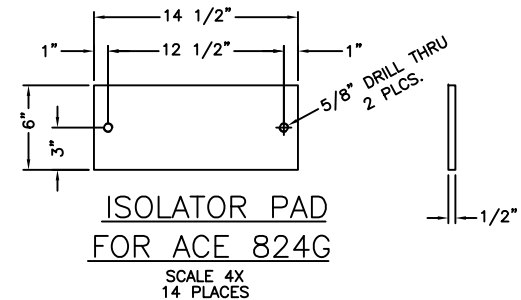
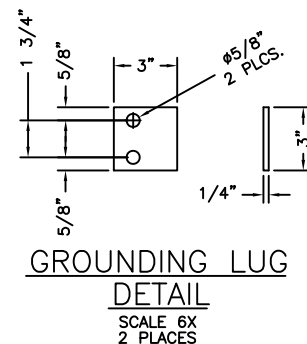
The gen-set was not available for physical review when this drawing was created. Please verify all dimensions prior to fabrication of parts connected to the location of the gen-set. If the dimensions do not match please contact Engineering



ELEVATION VIEW
U.L. 142 SUB BASE FUEL TANK
3,590 GALLON CAPACITY/3,000 GALLON USABLE

REF.	FITTING SIZE	DESCRIPTION
D1	1" NPT	TANK DRAIN – SECONDARY
E1	2" NPT	ENGINE FUEL SUPPLY – 1 1/2" NPT DIP TUBE
E2	2" NPT	ENGINE FUEL RETURN – 1 1/2" NPT DIP TUBE
F1	4" NPT	FUEL FILL W/ OPV (95%) & 2" CAMLOCK
L1	2" NPT	LEVEL GAUGE – DIRECT SITE READING
S1	2" NPT	LOW LEVEL SWITCH – N.C. – 35%
S2	2" NPT	HIGH LEVEL SWITCH – N.O. – 90%
S4	2" NPT	CRITICAL HIGH LEVEL SWITCH – N.O. – 95%
S5	2" NPT	LEAK DETECTOR SWITCH – N.O.
SX2	2" NPT	SPARE FITTING – SECONDARY – (1)
V1	2" NPT	NORMAL VENT – PRIMARY – EXTENDED OUTSIDE OF ENCLOSURE TO ROOF LINE (AT LEAST 12' ABOVE GRADE) SHIPPED LOOSE
V2	8" NPT	EMERGENCY VENT-PRIMARY – EXTENDED OUTSIDE OF ENCLOSURE TO ROOF LINE (AT LEAST 12' ABOVE GRADE) SHIPPED LOOSE
V3	8" NPT	EMERGENCY VENT-SECONDARY-EXTENDED OUTSIDE OF ENCLOSURE TO ROOF LINE (AT LEAST 12' ABOVE GRADE) SHIPPED LOOSE
X2	2" NPT	SPARE FITTING – (3)
X4	4" NPT	SPARE FITTING – (1)

*FLOAT SWITCHES WIRED TO GEN-SET CONTROL PANEL VIA FLEX.
*FUEL SUPPLY & RETURN LINES CONNECTED TO TANK FITTINGS.



END VIEW

- ☐ APPROVED AS IS – Manufacturing may proceed.
- ☐ APPROVED WITH NOTED CHANGES – Resubmit drawing; manufacturing may proceed.
- ☐ NOT APPROVED – Correct drawing as noted and resubmit for approval before manufacturing begins.

BY: _____ DATE: _____

COMPANY: _____

RETURNED APPROVAL DRAWINGS WITH SIGNATURE
REQUIRED BEFORE ACS WILL BEGIN
MANUFACTURING PROCESS

QUOTE NO.: 1204020 REV. 6
PO NO.: 120043E001
WO NO.: TBD
JOB NAME: US AIR



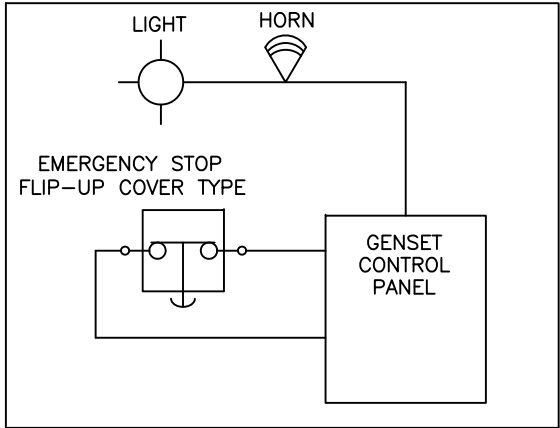
F	—	AS BUILT	CL	SO	11/1/21	TOLERANCES (EXCEPT AS NOTED) DECIMAL ± 0.125" FRACTIONAL ± 1/8" ANGULAR ± 3" SCALE 3/16"=1" DATE 05/18/12	EMPIRE CAT	MIS	CHECKED BY:
E	—	CHANGED STUB UP TO 10" X 10"	DK	SO	09/10/12				
D	—	CHANGED E1 FROM 4" TO 2" NPT (FUEL SUPPLY)	DM	SO	07/30/12				
C	—	SEE SHEET 2	MS	SO	06/18/12				
B	—	SEE OTHER SHEETS	MS	SO	06/11/12				
A	—	SEE SHEET 2	MS	SO	05/22/12				
REV	ECO NUMBER	DESCRIPTION	BY	APPD	DATE	TITLE U.L. 142 SUB BASE FUEL TANK			
						DRAWING NUMBER	11841-10		APPROVED BY: SO
								SHEET 4 of 4	REV. F

PANEL SCHEDULE

(APPARENT LOAD – NOT CALCULATED)

NO.	LOAD DESCRIPTION	A	B	A	B	LOAD DESCRIPTION	NO.
1	JACKET WATER HEATER	40		20		INTERIOR LIGHTS	2
3			40		20	DUPLEX RECEPTACLES	4
5	JACKET WATER HEATER	40		10		ALT. HEATER	6
7			40		20	BATTERY CHARGER	8
		↓	↓	↓	↓		
		A	80		30	TOTAL→	110 AMPS
		B		80	40	TOTAL→	120 AMPS

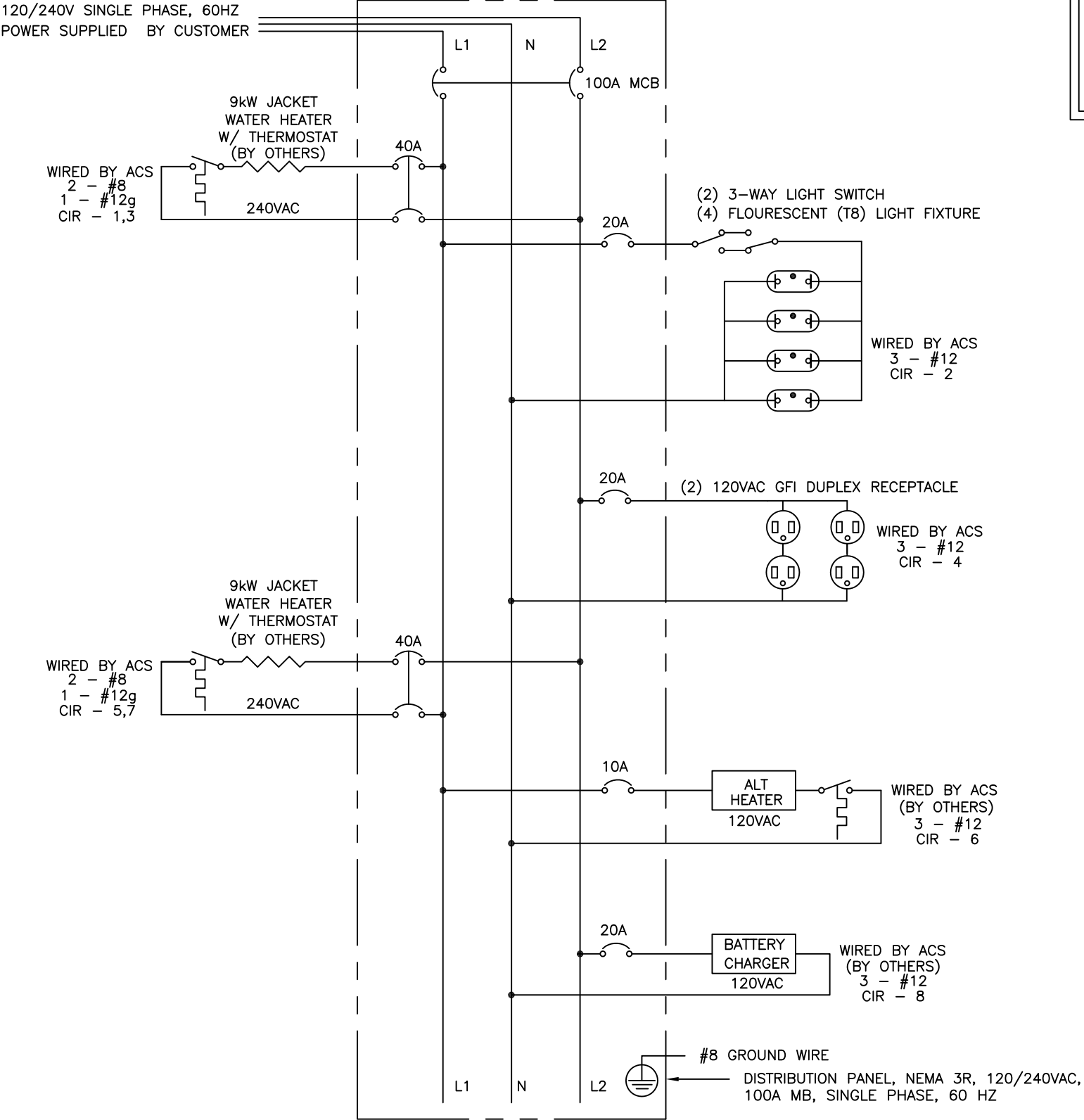
GENSET EMERGENCY STOP, LIGHT & HORN



WIRED TO GENSET CONTROL PANEL VIA SEAL TIGHT

ELECTRICAL BILL OF MATERIAL	
QTY	DESCRIPTION
1	POWER DISTRIBUTION PANEL, 100A MAIN BREAKER, 120/240VAC SINGLE PHASE
1	EQUIPMENT GROUNDING BLOCK
4	FLUORESCENT (T8) LIGHT FIXTURE
2	3-WAY LIGHT SWITCH
2	20 AMP GFI DUPLEX RECEPTACLE
1	EMERGENCY STOP w/ FLIP-UP COVER (PULL TO STOP)
1	EMERGENCY HORN
1	EMERGENCY WARNING LIGHT
2	40 AMP DOUBLE POLE BREAKER QO
3	20 AMP SINGLE POLE BREAKER QO
1	10 AMP SINGLE POLE BREAKER QO
1LT.	EMT CONDUIT, SEAL TIGHT & COMPRESSION FITTINGS

PROPRIETARY NOTICE
THIS DRAWING CONTAINS DESIGNS AND OTHER INFORMATION WHICH ARE THE PROPERTY OF ACS MANUFACTURING, INC. EXCEPT FOR THE RIGHTS GRANTED EXPRESSLY BY CONTRACT, THIS DRAWING MAY NOT BE DISCLOSED OR DUPLICATED IN WHOLE OR IN PART OR USED FOR MANUFACTURE OF DESIGNS DISCLOSED HEREIN WITHOUT THE PRIOR WRITTEN PERMISSION OF ACS MANUFACTURING, INC.



- ELECTRICAL NOTES:
- 1) INSTALL BOND ON ENCLOSURE.
 - 2) INSTALL GROUND WIRE IN EVERY RACEWAY.
 - 3) ACS TO MOVE GENSET REAR MOUNTED BREAKER & CONTROL PANEL TO LEFT SIDE.

- ☐ APPROVED AS IS – Manufacturing may proceed.
- ☐ APPROVED WITH NOTED CHANGES – Resubmit drawing; manufacturing may proceed.
- ☐ NOT APPROVED – Correct drawing as noted and resubmit for approval before manufacturing begins.

BY: _____ DATE: _____

COMPANY: _____

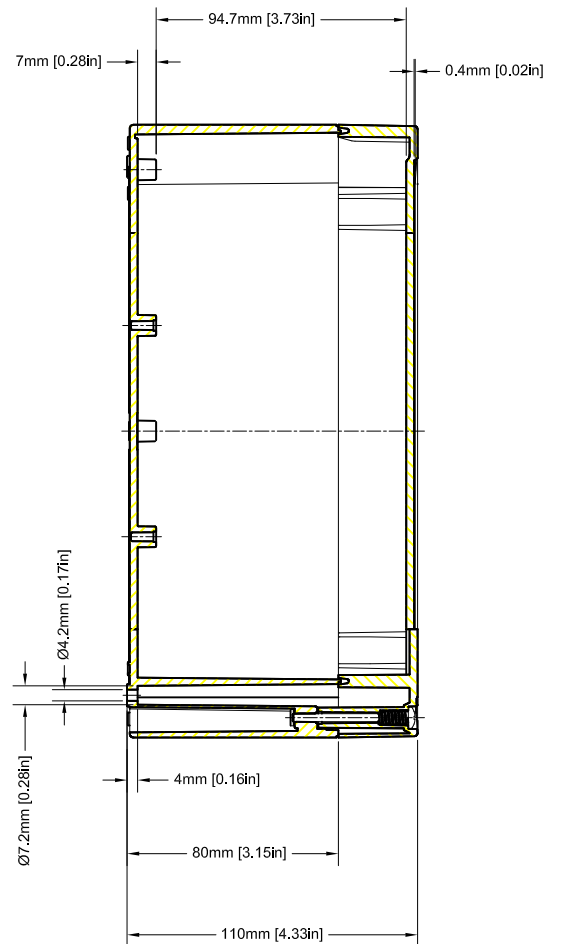
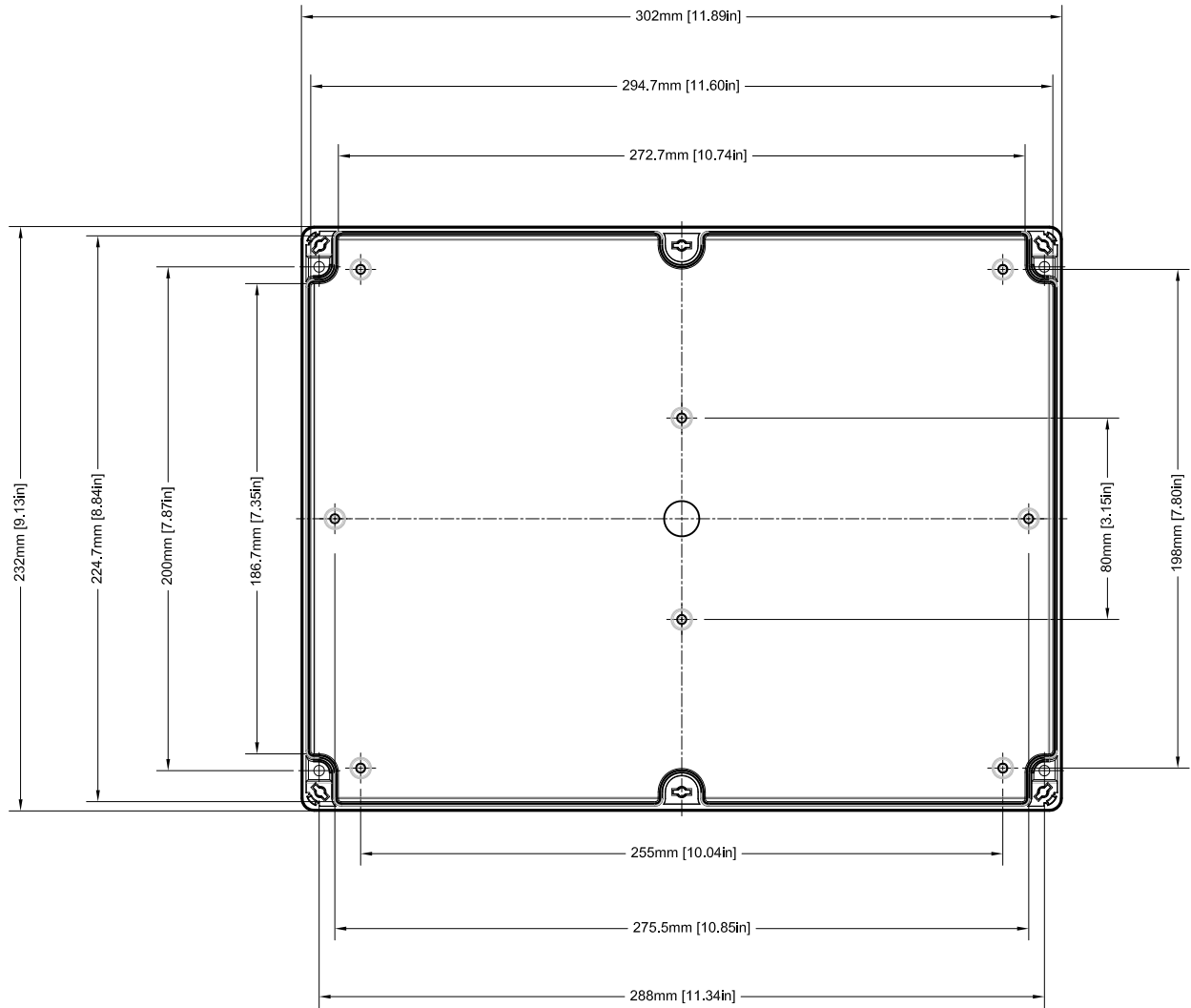
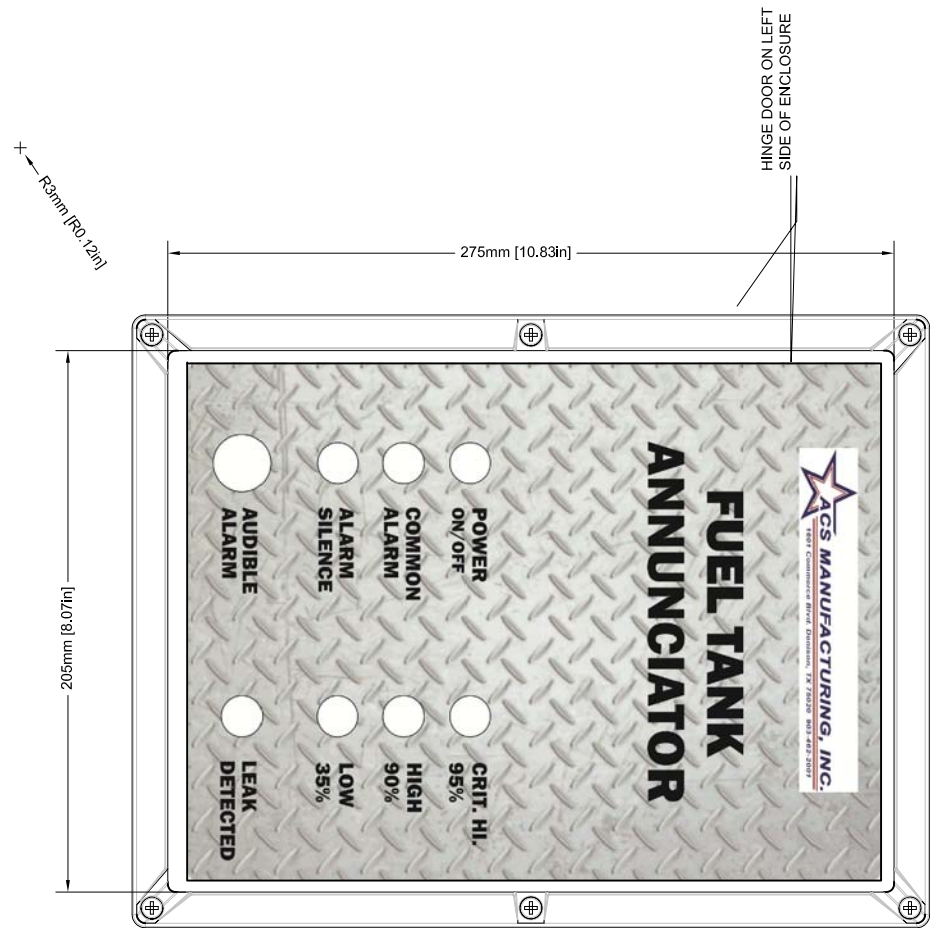
RETURNED APPROVAL DRAWINGS WITH SIGNATURE
REQUIRED BEFORE ACS WILL BEGIN
MANUFACTURING PROCESS

QUOTE NO.: 1204020 REV. 6
PO NO.: 120043E001
WO NO.: TBD
JOB NAME: US AIR



TOLERANCES (EXCEPT AS NOTED)	EMPIRE CAT		DRAWN BY: MTS	
DECIMAL ± N/A			CHECKED BY:	
FRACTIONAL ± N/A			CHECKED BY:	
ANGULAR ± N/A			APPROVED BY: SO	
SCALE N/A	TITLE ACOUSTICAL ENCLOSURE ASSEMBLY ELECTRICAL SCHEMATIC		SHEET 1 of 3	REV. B
DATE 05/18/12	DRAWING NUMBER 11841-10E			

B	-	ADDED E-STOP, HORN & LIGHT	DK	SO	09/10/12
A	-	UPDATED JWH SIZES AND QUANTITIES	MS	SO	06/11/12
REV	ECO NUMBER	DESCRIPTION	BY	APPD	DATE



- ☐ APPROVED AS IS – Manufacturing may proceed.
- ☐ APPROVED WITH NOTED CHANGES – Resubmit drawing; manufacturing may proceed.
- ☐ NOT APPROVED – Correct drawing as noted and resubmit for approval before manufacturing begins.

BY: _____ DATE: _____

COMPANY: _____

**RETURNED APPROVAL DRAWINGS WITH SIGNATURE
REQUIRED BEFORE ACS WILL BEGIN
MANUFACTURING PROCESS**

QUOTE NO.: 1204020 REV. 6
PO NO.: 120043E001
WO NO.: TBD
JOB NAME: US AIR



TOLERANCES (EXCEPT AS NOTED)		TITLE FUEL TANK ANNUNCIATOR ELECTRICAL SCHEMATIC	DRAWN BY: MTS	
DECIMAL	± N/A		CHECKED BY:	
FRACTIONAL	± N/A		CHECKED BY:	
ANGULAR	± N/A		APPROVED BY: SO	
SCALE	N/A		SHEET 2 of 3	
DATE	05/18/12	DRAWING NUMBER	11841-10E	
REV	ECO NUMBER	DESCRIPTION	BY	REV. B

PROPRIETARY NOTICE

THIS DRAWING CONTAINS DESIGNS AND OTHER INFORMATION WHICH ARE THE PROPERTY OF ACS MANUFACTURING, INC. EXCEPT FOR THE RIGHTS GRANTED EXPRESSLY BY CONTRACT, THIS DRAWING MAY NOT BE DISCLOSED OR DUPLICATED IN WHOLE OR IN PART OR USED FOR MANUFACTURE OF DESIGNS DISCLOSED HEREIN WITHOUT THE PRIOR WRITTEN PERMISSION OF ACS MANUFACTURING, INC.

B	-	SEE SHEET #1	DK	SO	09/10/12
REV	ECO NUMBER	DESCRIPTION	BY	APPD	DATE

☐ APPROVED AS IS – Manufacturing may proceed.

☐ APPROVED WITH NOTED CHANGES – Resubmit drawing; manufacturing may proceed.

☐ NOT APPROVED – Correct drawing as noted and resubmit for approval before manufacturing begins.

BY: _____ DATE: _____

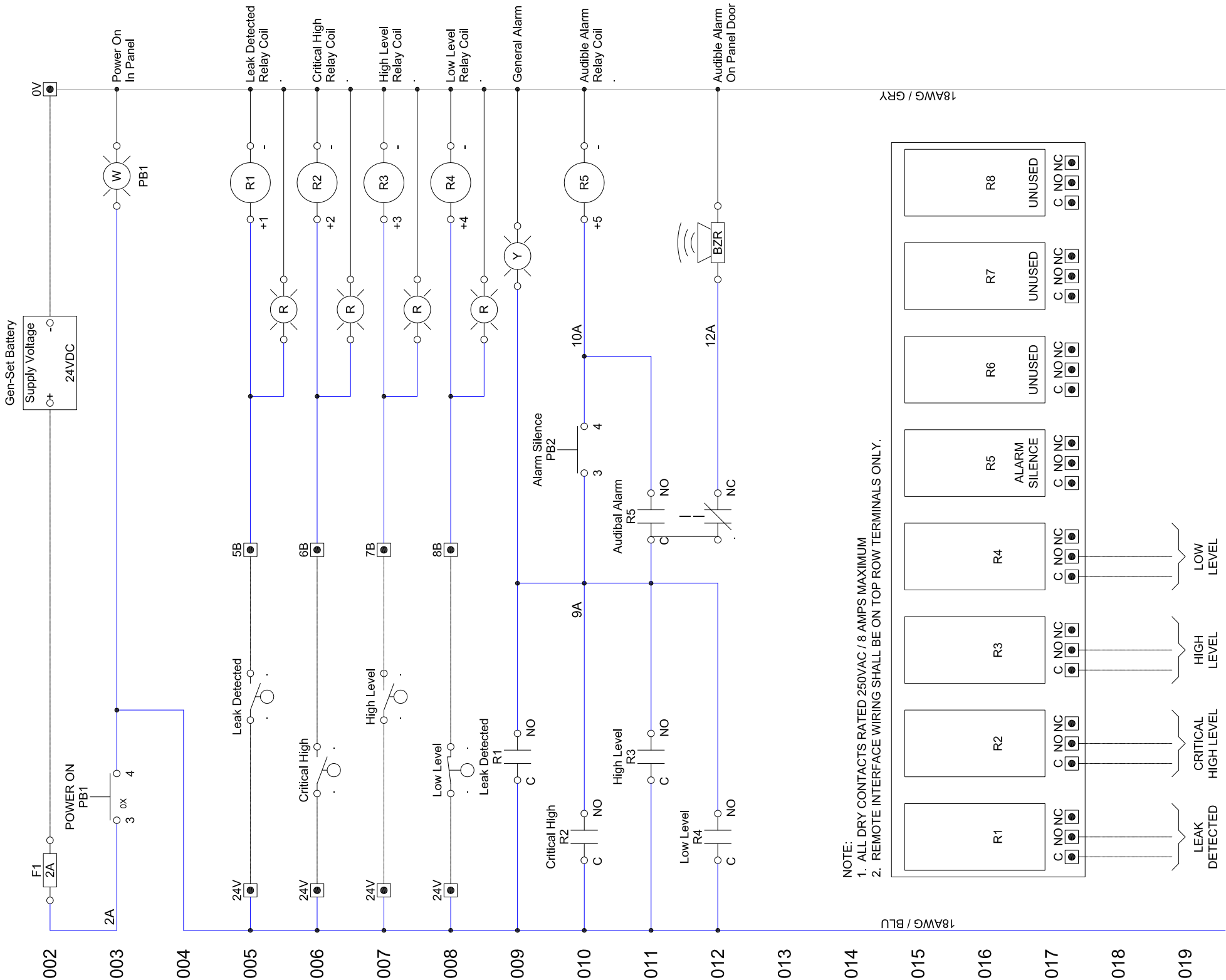
COMPANY: _____

RETURNED APPROVAL DRAWINGS WITH SIGNATURE
REQUIRED BEFORE ACS WILL BEGIN
MANUFACTURING PROCESS

NOTE:

1. ALL DRY CONTACTS RATED 250VAC / 8 AMPS MAXIMUM

2. REMOTE INTERFACE WIRING SHALL BE ON TOP ROW TERMINALS ONLY.



- ☐ APPROVED AS IS – Manufacturing may proceed.
- ☐ APPROVED WITH NOTED CHANGES – Resubmit drawing; manufacturing may proceed.
- ☐ NOT APPROVED – Correct drawing as noted and resubmit for approval before manufacturing begins.

BY: _____ DATE: _____

COMPANY: _____

RETURNED APPROVAL DRAWINGS WITH SIGNATURE
REQUIRED BEFORE ACS WILL BEGIN
MANUFACTURING PROCESS